

Joins page 6

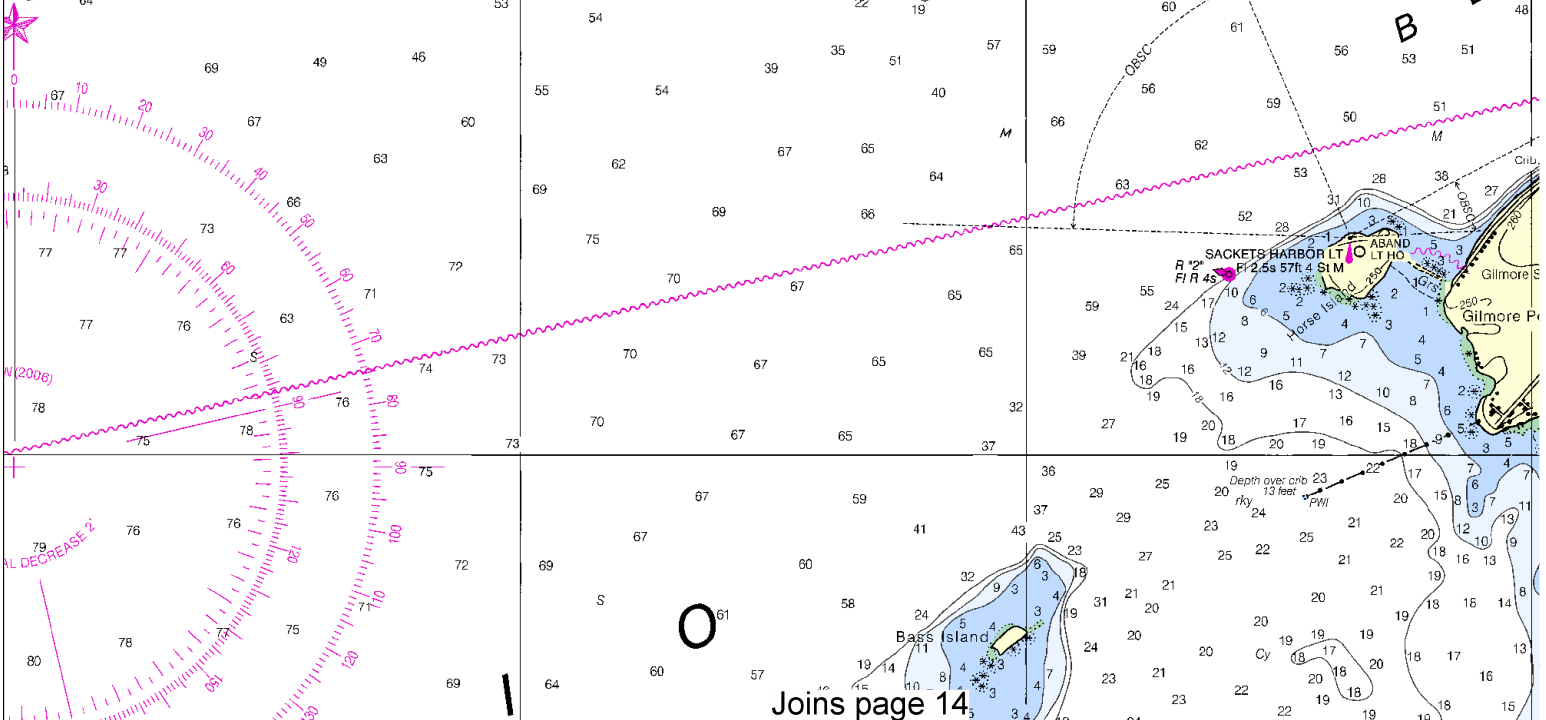


UNITED STATES - GREAT LAKES
LAKE ONTARIO - NEW YORK

CHAUMONT, HENDERS AND BLACK RIVER BAYS

Polyconic Projection
Scale 1:30,000
North American Datum of 1983
(World Geodetic System 1984)
SOUNDINGS IN FEET

Joins page 9



Joins page 14

10



Printed at reduced scale.

SCALE 1:30,000
Nautical Miles

See Note on page 5.



CAUTION

Limitations on the use of radio signals as aids to marine navigation can be found in the U.S. Coast Guard Light Lists and National Geospatial-Intelligence Agency Publication 117. Radio direction-finder bearings to commercial broadcasting stations are subject to error and should be used with caution. Station positions are shown thus: (O) (Accurate location) (o) (Approximate location)

Joins page 7

SON
S

BLACK RIVER BAY
Pillar Point
Sackets Harbor
Boulton's Beach

44° 00'

59'

45'

30'

15'

43° 58'

50'

CAUTION

Temporary changes or defects in aids to navigation are not indicated on this chart. See Local Notice to Mariners. During some winter months or when endangered by ice, certain aids to navigation are replaced by other types or removed. For details see U.S. Coast Guard Light List.

WARNING

The prudent mariner will not rely solely on any single aid to navigation, particularly on floating aids. See U.S. Coast Guard Light List and U.S. Coast Pilot for details.

SACKETS HARBOR, N Y

SCALE 1:5,000
SOUNDINGS IN FEET

FEET

BLACK RIVER BAY

43° 56'

Joins page 15