

CAUTION
 y changes or defects in aids to navigation are not indicated on this chart. See the winter months or when endangers certain aids to navigation are her types or removed. For details t Guard Light List.

ADAR REFLECTORS
 ctors have been placed on many to navigation. Individual radar ification on these aids has been his chart.

CAUTION
 odic high water conditions in the some features charted as visible Datum may be submerged, par- ear shore areas. Mariners should ution.

CAUTION
 annels shown by broken lines are iling, particularly at the edges.

ILLUTION REPORTS
 spills of oil and hazardous sub- e National Response Center via 2 (toll free), or to the nearest U.S. acility if telephone communication 33 CFR 153).

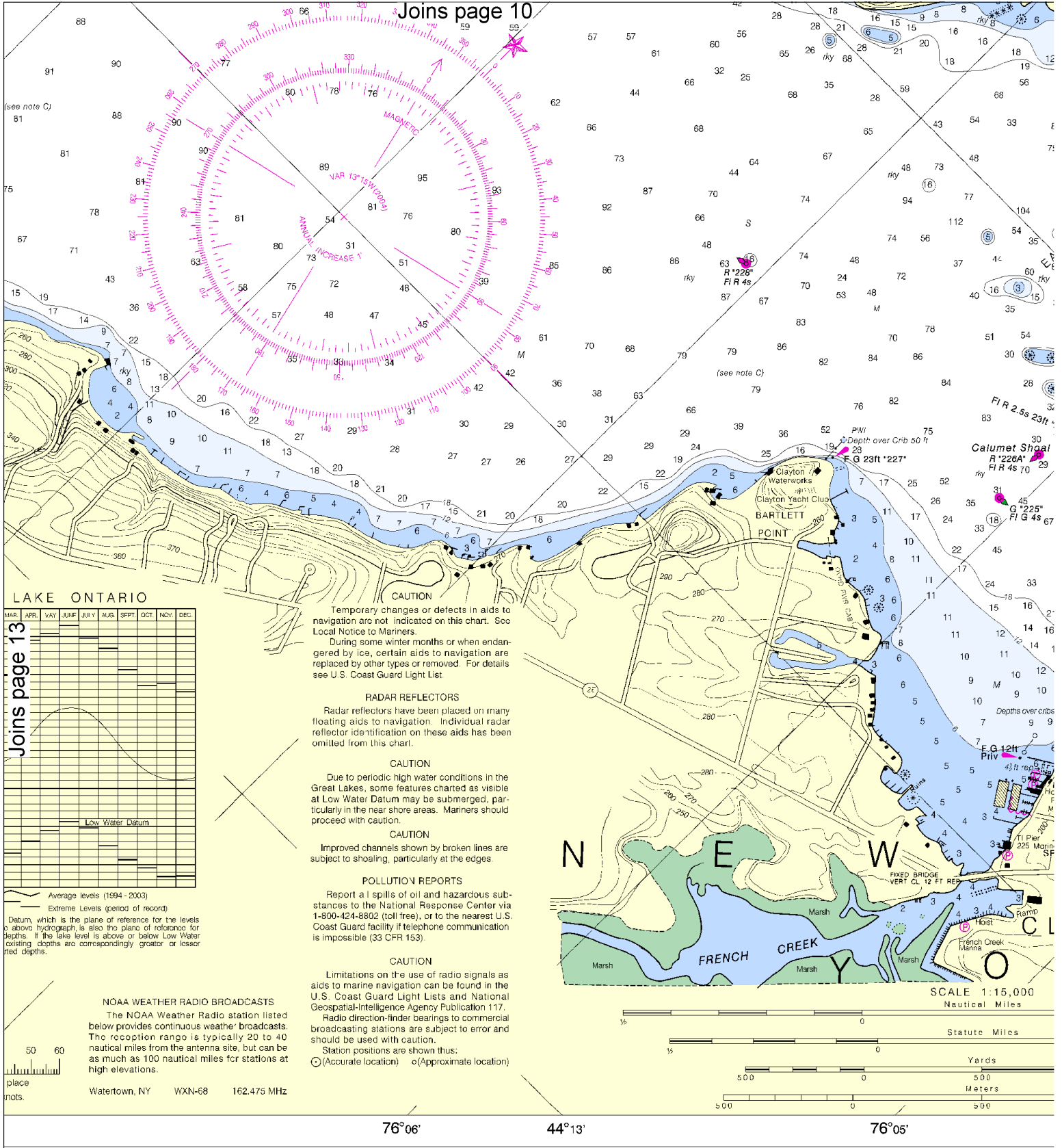
CAUTION
 on the use of radio signals as navigation can be found in the ard Light Lists and National iligence Agency Publication 117. ion-finder bearings to commercial tations are subject to error and d with caution. ions are shown thus: (caution) (Approximate location)

76°06' 44°13' 76°05' 44°14' 76°04'

EET

Published at Washington, D.C.
 U.S. DEPARTMENT OF COMMERCE
 NATIONAL OCEANIC AND ATMOSPHERIC ADMINISTRATION
 NATIONAL OCEAN SERVICE
 COAST SURVEY

FATHOMS	1	2	3	4	5	6	7	8	9	10	11	12	13	14	15	16	17
FEET	6	12	18	24	30	36	42	48	54	60	66	72	78	84	90	96	102
METERS	1	2	3	4	5	6	7	8	9	10	11	12	13	14	15	16	17



Joins page 13

MONTH	MAR	APR	MAY	JUNE	JULY	AUG	SEPT	OCT	NOV	DEC
Low Water Datum										

LAKE ONTARIO

Average Levels (1994 - 2003)
 Extreme Levels (period of record)

Datum, which is the plane of reference for the levels above hydrograph, is also the plane of reference for depths. If the lake level is above or below Low Water Datum existing depths are correspondingly greater or lesser than depths.

NOAA WEATHER RADIO BROADCASTS
 The NOAA Weather Radio station listed below provides continuous weather broadcasts. The reception range is typically 20 to 40 nautical miles from the antenna site, but can be as much as 100 nautical miles for stations at high elevations.

Watertown, NY WXN-68 162.475 MHz

CAUTION
 Temporary changes or defects in aids to navigation are not indicated on this chart. See Local Notice to Mariners.
 During some winter months or when endangered by ice, certain aids to navigation are replaced by other types or removed. For details see U.S. Coast Guard Light List.

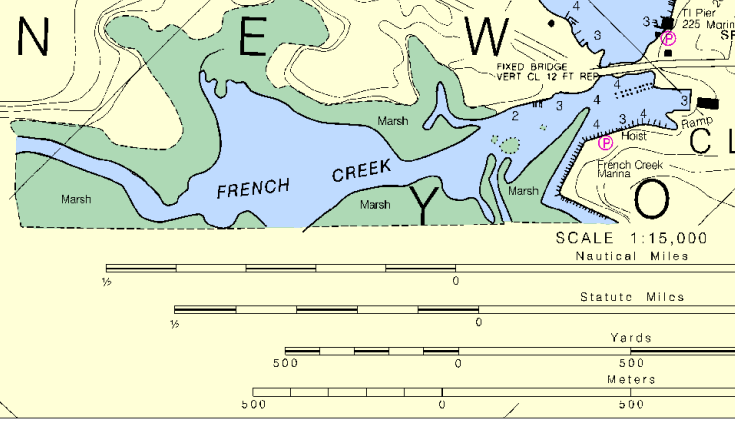
RADAR REFLECTORS
 Radar reflectors have been placed on many floating aids to navigation. Individual radar reflector identification on these aids has been omitted from this chart.

CAUTION
 Due to periodic high water conditions in the Great Lakes, some features charted as visible at Low Water Datum may be submerged, particularly in the near shore areas. Mariners should proceed with caution.

CAUTION
 Improved channels shown by broken lines are subject to shoaling, particularly at the edges.

POLLUTION REPORTS
 Report all spills of oil and hazardous substances to the National Response Center via 1-800-424-8802 (toll free), or to the nearest U.S. Coast Guard facility if telephone communication is impossible (33 CFR 153).

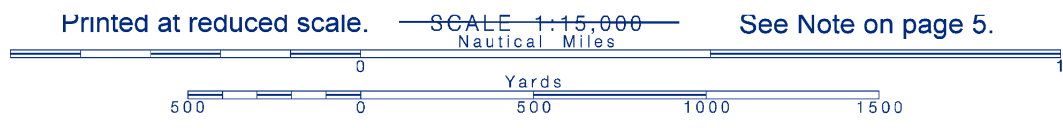
CAUTION
 Limitations on the use of radio signals as aids to marine navigation can be found in the U.S. Coast Guard Light Lists and National Geospatial-Intelligence Agency Publication 117.
 Radio direction-finder bearings to commercial broadcasting stations are subject to error and should be used with caution.
 Station positions are shown thus:
 ○ (Accurate location) ◦ (Approximate location)

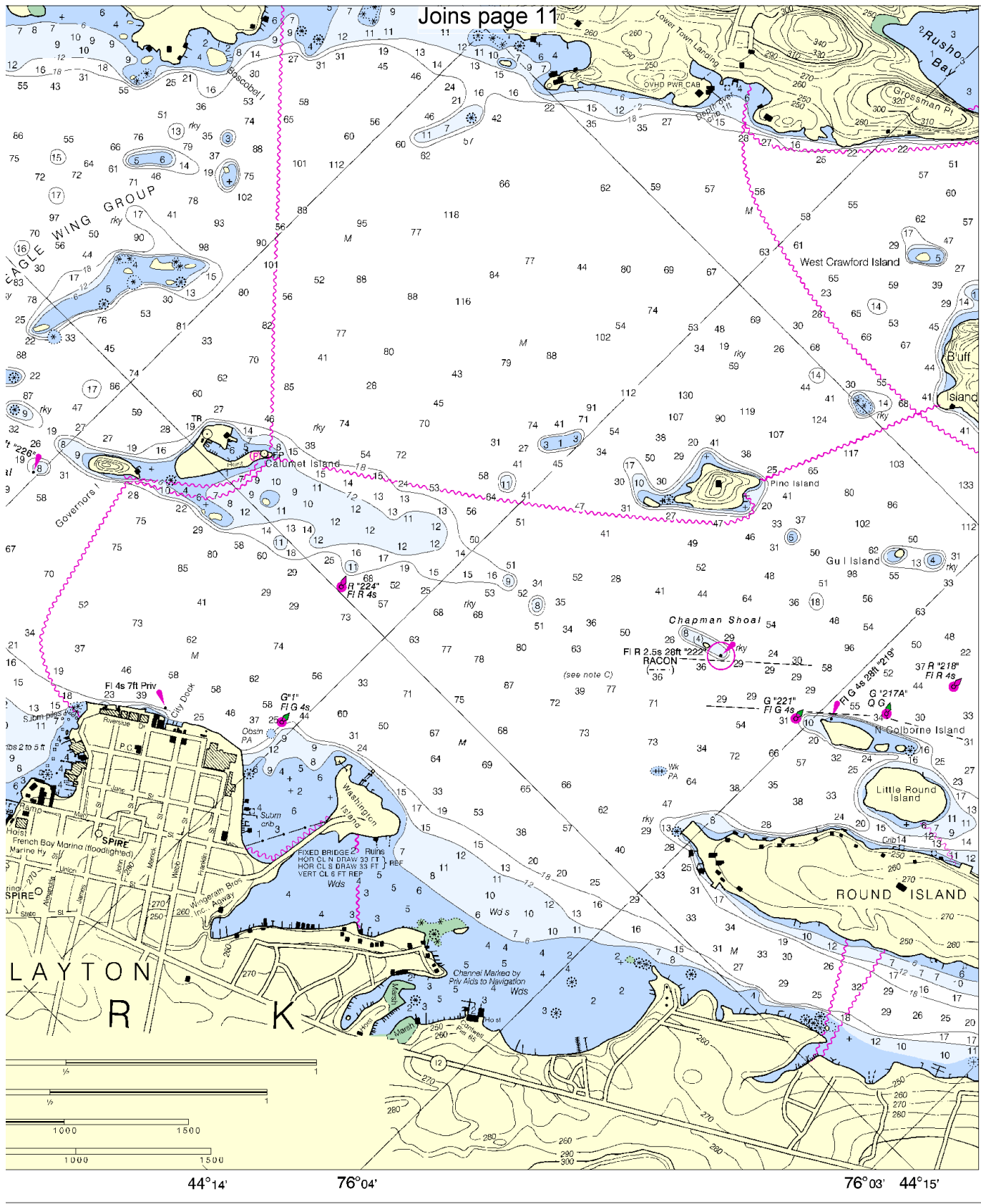


SOUNDINGS IN FEET

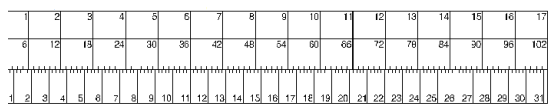
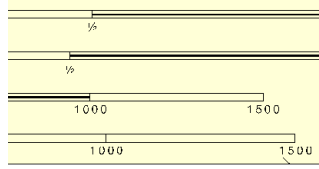
Published at Washington, D.C.
 U.S. DEPARTMENT OF COMMERCE
 NATIONAL OCEANIC AND ATMOSPHERIC ADMINISTRATION
 NATIONAL OCEAN SERVICE
 COAST SURVEY

FATHOMS	
FEET	
METERS	





76° 05'
 44° 16'
 76° 04'
 76° 03'
 44° 15'



St Lawrence River
 SOUNDINGS IN FEET - SCALE 1:15,000

14774

ED. NO. 17
 NSN 7642014010646
 NGA REFERENCE NO. 14XHA14774